



The Grapevine

Holy Week



and



Easter



Spring 2024



"PASTOR'S CORNER"

Beyond the Empty Tomb

As we celebrate on this joyous Easter, let us ponder the profound implications of Christ's resurrection for our lives and our faith. What experiences or insights from Easter Sunday will you take with you, dear reader? How does the message of the resurrection impact your understanding of God's love and power?

In the days following Easter, it is easy for us to slip back into the routines of daily life and lose sight of the transformative power of Christ's victory over death. How can we carry the spirit of Easter forward into our everyday existence, living as people of hope and resurrection in a world often plagued by despair and doubt? As we gather in worship and fellowship, let us remember that the Easter season extends beyond a single day on the calendar. How can we continue to cultivate a spirit of resurrection in our church community, supporting one another in faith and love?

May the hope and promise of Easter inspire us to live boldly and faithfully, confident in the knowledge that Christ is Risen and His victory is ours to share. He is Risen Indeed!

Pastor Hughes



Holy Week Services

Palm Sunday, March 24

8:30am & 10:30am

Maundy Thursday, March 28

7pm

Good Friday, March 29

Community Tenebrae Service

7pm, Nativity

Easter Sunday, March 31

8:30am & 10:30am



You're Cordially Invited to
HIPPIY HOP TO A FREE COMMUNITY

Easter
egg hunt

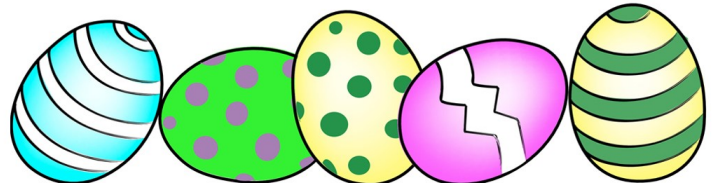
Saturday, March 30th • 10:00 a.m.

— Rain or Shine —

Orchard Park
Presbyterian Church
4369 South Buffalo Street

Treat Bags for the Kids • Refreshments

Bring the Whole Family and Invite Your
Friends and Neighbors. Everyone Welcome!



FROM THE PASTORAL ASSISTANT

PALM SUNDAY: TWO PROCESSIONS

When we think of Palm Sunday, our minds center on the spectacle of Jesus riding a donkey down the Mount of Olives and into the Holy City of Jerusalem amid the exultant frenzy of the cheering multitudes, made up mostly of peasants--underlings of a society dominated by the powerful: the religious and social rulers, the Roman dictatorship, the landowners. They see in Jesus the Deliverer, the promised Messiah, who will bring equality and justice, a better life.



At the same moment, another procession is approaching Jerusalem from the opposite direction. This procession is made up of imperial cavalry on horses, foot soldiers with weapons, banners, golden eagles lifted aloft, led by Pontius Pilate, the Roman governor of the region—arriving in the city at this holy season of pilgrimage, precisely to maintain order, lest the peasant population create any disturbance that might challenge the existing power structure.

The events of Holy Week—the daily events leading up to the betrayal, arrest, trial, and crucifixion vividly portray the struggle between the Kingdom of God, represented in Jesus, and “Kingdoms of this World,” musically portrayed in Handel’s *Messiah*. Oppression, domination, injustice—all prevail in our world today as never before. The cry to be heard, the desire for an equal opportunity are stifled by systems of dominance and control.

Holy Week—Palm Sunday through Easter—challenges us to choose which kingdom we will be a part of, and devote our lives to. In the end, it is not our efforts alone that determine the outcome. It is the promise of the Holy Spirit within us that enables us to fulfill the call to be Christ’s disciples.

Rev. Allyn Foster



The outstanding response to the March **Sandwich Sunday** must have been a "nod" to St. Patrick whose feast day is celebrated on March 17! Congregants brought in **94** and Family, Faith and Food participants added an additional **35** sandwiches!

Way to go people!

Thank you to Barbara Olandt for staffing the table and Joanne Hollenbeck for transporting them on the first leg of their journey (Hamburg PC) for Dudley Hollenbeck to drive into St. Luke's.

APRIL 21 is the next Sandwich Sunday.

Updated Church Office Hours

Effective **April 10**, the church office hours will be:

Monday—Thursday

9am-1pm

Friday

1pm-4pm

The Church Office will be closed on Monday, April 1 in observance of Easter Monday and Monday, April 8 for the Eclipse.

Musings from the Music Director

Easter is just around the corner! The past month has been a music-filled time at OPPC with our Celebration of African-American Music (February 25) and Synesthesia’s second concert (March 9). Last month’s issue featured the 2/25 concert; please see this month’s feature on Synesthesia!

On March 10 and March 17, we heard a harpsichord used at 10:30am Sunday worship services, accompanying **Angel Rhodes** on the latter date. This instrument was modeled after a 17th-century Flemish design in its construction. Hopefully, you enjoyed this rare and unique addition to our worship contributions.

Our Sanctuary Choir was invited to participate at the Good Friday Tenebrae service on **March 29 at 7pm** at Nativity of Our Lord Parish. Musical contributions from Orchard Park Presbyterian, St. Mark’s Episcopal, and Nativity will make this service a special contemplative evening of meditation. This marks the first time Nativity’s Tenebrae service has been able to fully involve community musical collaboration since the beginning of the COVID-19 pandemic, so we are happy to get the chance to make music together again.

Easter Sunday (3/31) will feature handbells, organ, and **Lindsey Roth** on trumpet with the choir’s anthems, in addition to an originally composed Easter Benediction. Many thanks to the congregation’s continued support of our musical endeavors at OPPC.

Keep making music,
Alex Hamilton

Found: The Ark of the Covenant!!!

Orchard Park, NY–

On Monday April 1, a small band of treasure hunters located the long sought after Ark of the Covenant in a small room at Orchard Park Presbyterian Church.

A truly spectacular find that will be spoken of for decades to come!



Pray Rake Eat

- Wear your work clothes -
- bring your gloves -
- bring your rakes and clippers -

On May 5 after worship service, we will rake leaves, clean out the playground, the boiler room stairwell, gutters and window wells, and bring the outdoor benches, tables and chairs for the summer. There will be a supervised kids’ activity. Lunch will be provided.



Pray
Rake
Eat



**Service Project - Youth in Grades 6-12
Buffalo Niagara WATERKEEPERS Spring Sweep
Saturday, April 20**

**Meet @ Hamburg Town Park Beach @ 10
Clean up the beach with pick up by parents @ Noon**

An OPPC Medical Form, Google Form and Medical Waiver for Waterkeepers must be completed in order to attend. Mrs. B has signed up for 7 spots. She is looking for another adult advisor and six youth to attend. We can have more spaces if we sign up for them ASAP!
Don't hesitate - contact Mrs. B today @ lindab@oppchurch.org if you wish to attend!

UPward Design for Life
Furnishing Homes & Transforming Lives for Those in Need

OPPC's Mission Dollars at Work

The Mission Ministry Team allocated **\$1,000.00 to UPward Design For Life** which is a newer organization in the Buffalo area whose mission is to help restore hope, dignity and independence for victims of domestic violence, refugees, people transitioning from homeless shelters, veterans, young adults aging out of the foster system and more. UPward furnishes homes and transforms lives.

The Mission MT also sent **\$900.00 to the One Great Hour of Sharing Offering** which is divided between the Presbyterian Hunger Program, Presbyterian Disaster Assistance Program and the Self Development of People. Presbyterians are known for their quick response and "boots on the ground" in so many situations around the globe with the humanitarian crisis in Gaza being the most critical.

If you would like to make a personal donation to OGHS you may do so at: <https://specialofferings.pcusa.org/offering/oghs/>

The Genesis Center

St. Patrick's Day edition at The Genesis Center! Thank you to Anne Helfrich for chaperoning!
The next serving date youth grade 6-12 may sign up for is **APRIL 19**.



New Members

On Sunday March 17, we welcomed new members!



Joining us are **Patricia Clark and Paul and Kaitlyn Woodard**, pictured here with their mentors, Anne Helfrich & Al Sager, and Pastor Hughes. A reception was enjoyed by all after the 10:30am service.

If you see our newest members, please give them a warm OPPC welcome!

Mission Workshop meets

**Wednesdays
10am to Noon in
The Meeting Place**



WORSHIP NOTES

APRIL IS EASTER SEASON

Our church calendar celebrates Easter for an entire liturgical season, not only for a day. The resurrection of Christ is a bedrock event in Christianity, so it is fitting to place Jesus' triumph over death as the centerpiece for the spring liturgical calendar. We will observe the joyous season of Easter for the entire month of April. Join us in Worship every Sunday at 8:30am with Communion, at 10:30am, or online anytime. He is Risen, indeed!

April 7: Traditional Communion, Pastor Hughes preaches.

April 14: Pastor Hughes preaches.

April 21: Pastor Hughes preaches.

April 28: Rev. Allyn Foster preaches. Congregational meeting follows the 10:30 service.

See you in church!



RUMMAGE SALE

Friday, April 26 and Saturday, April 27

As you begin spring cleaning, please save your gently used items that you no longer want or need. Frequently in demand at the sale are household items, jewelry, clothing, toys, linens, books and sporting goods. We will not be able to accept televisions, computers, exercise equipment or shoes.

Please note the following important dates:

Saturday, April 13 – Sunday, April 21 - You may drop off donated items in the hallway behind the Fellowship Hall stage. The Clark Street entrance will be open Sunday (11am-6pm) Monday – Friday (1pm-6pm) and Saturday (9am-6pm).

Sunday, April 21 - Volunteers are needed to start setting up before and after the 10:30am worship service.

Monday, April 22 and Tuesday, April 23 – Volunteers are needed to sort items. Due to the Access Control System, morning helpers **MUST** meet at 9am in the Reception Room in order to be admitted to the Fellowship Hall. Afternoon volunteers should come at 1pm or later and can go directly to the Fellowship Hall.

Wednesday, April 24 – Helpers are needed to price items and should meet at 9am in the Reception Room. Lunch will be provided.

Friday, April 26 – The sale goes from 2pm until 8pm Helpers are needed for shifts 1:30-5pm and 5-8pm.

Saturday, April 27 - Bag Sale from 10am until noon. Fill a brown paper bag for just \$2.00. Helpers and cashiers are needed 9:30am–noon. Starting at noon volunteers are needed to clean up.

Look for the sign-up chart at a table in the hallway near the office and volunteer to help with this worthwhile event. Funds from the Rummage Sale are used to support mission projects and to provide items needed by our church. If you have any questions, please call Sue Sager.

Sunday	Monday	Tuesday	Wednesday	Thursday	Friday	Saturday
<p><u>March 31</u> Easter Sunday</p> <p>8:30a Worship 10:30a Worship</p>	<p><u>April 1</u> Easter Monday Office Closed</p>	<p><u>April 2</u></p> <p>Presidential Primary-RR/TMP 9a TWT 12p Wednesday Morning Musicales Rehearsal-S 5:30p PEO-IIR</p>	<p><u>April 3</u></p> <p>10a Friendship Circle-IIR 10a Staff-CR 10a Mission Workshop-TMP 5:30p Bell Choir 6:30p Choir</p>	<p><u>April 4</u></p> <p>6p Quaker Quilters BOD-RR 7p Quaker Quilters-RR 7:30p AI-Anon-IIR</p>	<p><u>April 5</u></p> <p>10:30a Music w/Miss Sarah-UC</p>	<p><u>April 6</u></p>
<p><u>April 7</u></p> <p>8:30a Worship 9:30a Education 10:30a Worship 11:30 Blood Pressure Screening-CR</p>	<p><u>April 8</u> Office Closed</p> <p>5:45p OP Chorale BOD-CR 6:30p Co-Op BOD-TMP 7p OP Chorale-S 7p Property MT-CR</p>	<p><u>April 9</u></p> <p>9a TWT 11a Sanford Webster Memorial Service-C 1p Presbyterian Women Coordinating Team-TMP 2p Wednesday Morning Musical Rehearsal-S 2:30p Worship MT-CR 6:30p A&F MT-CR 7p Christian Ed-IIR</p>	<p><u>April 10</u></p> <p>9a Wednesday Morning Musicales-S/RR 10a Staff-CR 10a Mission Workshop-TMP 5:30p Bell Choir 6:30p Choir</p>	<p><u>April 11</u></p> <p>3p Fox Run Service 7:30p AI-Anon-IIR</p>	<p><u>April 12</u></p> <p>10:30a Music w/Miss Sarah-UC</p>	<p><u>April 13</u></p> <p>8:30a OP Symphony Women's Scholarship 9a First Day of Rummage Sale Drop Off-FH 10a Presbyterian Women Spring Gathering-Wayside Presbyterian</p>
<p><u>April 14</u></p> <p>8:30a Worship 9:30a Education 10:30a Worship</p>	<p><u>April 15</u></p> <p>7p Mission MT-CR 7p MDO Board-MDO 7p OP Chorale-S 7p Deacons-TMP</p>	<p><u>April 16</u></p> <p>9a TWT 7p Book Group-TMP</p>	<p><u>April 17</u></p> <p>10a Staff-CR 10a Mission Workshop-TMP 5:30p Bell Choir 6:30p Choir</p>	<p><u>April 18</u></p> <p>6p Meditation for Peace-IIR 7:30p AI-Anon-IIR</p>	<p><u>April 19</u></p> <p>10:30a Music w/Miss Sarah-UC 3:30p Genesis Center</p>	<p><u>April 20</u></p> <p>10a Waterkeepers Spring Sweep-Hamburg Town Beach</p>
<p><u>April 21</u> Sandwich Sunday</p> <p>8:30a Worship 9:30a Education 10:30a Worship 11:30a Rummage Sale Set Up-FH</p>	<p><u>April 22</u></p> <p>9a Rummage Sale Set Up-FH 6:30p Ministry Team Leader Meeting-TMP 7p OP Chorale-S 7p Session-TMP</p>	<p><u>April 23</u></p> <p>9a Rummage Sale Set Up-FH 9a TWT 9a Grapevine Deadline</p>	<p><u>April 24</u></p> <p>9a Rummage Sale Set Up-FH 10a Staff-CR 10a Mission Workshop-TMP 5:30p Bell Choir 6:30p Choir</p>	<p><u>April 25</u></p> <p>3p Fox Run Service 7:30p AI-Anon-IIR</p>	<p><u>April 26</u></p> <p>9a Grapevine Mailing 10:30a Music w/Miss Sarah-UC 2p Rummage Sale 5:30p PEO-TMP</p>	<p><u>April 27</u></p> <p>9a Rummage Sale 6p Family Game Night</p>
<p><u>April 28</u></p> <p>8:30a Worship 9:30a Education 10:30a Worship 10:30a Congregation Meeting/Election of Officers 12p Training of Elders/Deacons 5p Buffalo Rock Voices-S</p>	<p><u>April 29</u></p> <p>7p OP Chorale-S</p>	<p><u>April 30</u></p> <p>9a TWT</p>	<p><u>May 1</u></p> <p>10a Friendship Circle-IIR 10a Staff-CR 10a Mission Workshop-TMP 5:30p Bell Choir 6:30p Choir</p>	<p><u>May 2</u></p> <p>6p Quaker Quilters BOD-RR 7p Building Protocol & Safety-TMP 7p Quaker Quilters-RR 7:30p AI-Anon-IIR</p>	<p><u>May 3</u></p> <p>10:30a Music w/Miss Sarah-UC</p>	<p><u>May 4</u></p>

**Location Legend: S –Sanctuary; RR—Reception Room; LB—Library; CH—Choir Room
CR—Conference Room; IIR—Irene Irving Room; FH—Fellowship Hall; UC—Undercroft; MDO—Nursery; MG—Memorial Garden;
PW—Presbyterian Women; TMP—The Meeting Place**

Our calendar sometimes has changes after the GV goes to print, stay up-to-date by viewing the complete [calendar](#) on the church website.

A Saint Patrick's Day Celebration Family, Faith & Food March 2024



French Toast Sticks & Bacon for Breakfast...



Shamrocks & The Trinity
God as Creator +
God as Savior +
God as Helper



...a special
interactive
prayer...

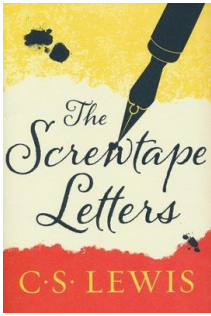


... and PB&J Sandwiches & Sprinkle Decorated Cookies
for St. Luke's



Adult Education

9:30am ~ The Meeting Place



We will continue to read and discuss *The Screwtape Letters* by C. S. Lewis through the end of the program year. The letters are correspondences between Screwtape, a worldly-wise old devil, and his nephew Wormwood, a novice demon in charge of securing the damnation of an ordinary young man. It is an engaging account of temptation and triumph over it. Contact the facilitator, Dave Brummer (dgbrummer@gmail.com), with any questions.

Please note: No Class on Easter Sunday.

The Littles will Sing! The Littles will Sing!!!

Our Music Director, Alex Hamilton, will be practicing with The Littles during Church School at 9:30 beginning Sunday, **April 14**.

On Sunday, **May 5** (Pray, Rake, Eat - no Church School!) Alex will practice with ALL THE LITTLES after the 10:30 worship service while their parents are working outside to beautify the church grounds.

On a Sunday in May, they will lead worship in song at the 10:30 service. More information will be sent directly to families after Easter.

Education Schedule for Littles & Bigs

Easter Sunday

No Church School or Pray & Play ~ Nursery is OPEN for 10:30 service

April 7, 14, 21 and 28

Church School for both age groups @ 9:30 + Pray & Play + Nursery

May 5

Pray, Rake, Eat - NO Church School@9:30 - Pray & Play & Nursery @ 10:30 - Activity for Littles (practice singing with Alex and more!) and Nursery Open. Kids eat lunch with their families after they work outside.



The Bigs created their own labyrinths as their study of the stories of Peter continued.

Navigating life is tough, but with God and helpers along the way we can indeed figure out how to live like Jesus showed Peter and his other disciples.





Synesthesia

On **Saturday March 9 at 1pm**, OPPC hosted the second installment of its new concert series *Synesthesia: A Collaboration of WNY Music, Art, and Community* in the reception area. 17th-century music for keyboard was performed on a harpsichord tuned in meantone temperament, a distinctive keyboard tuning of the period.

Programming featured colorful chromatic works from North and South Germany that blended Baroque influences from Italy, France, and the Netherlands.



Samantha Domagala, a watercolor artist (**The Roaming Buffalo Art**), who specializes in Buffalo architecture and portraits, painted a live piece during the music and presented the finished product for



inclusion in OPPC's new collection of works from the series. It was presented live during the 10:30am service on March 17. Attendees of the concert were free to walk around and view the artist while she worked and ask questions about her process.

Presbyterian Women of Western New York Spring Gathering

The **Presbyterian Women of WNY** will hold their Spring Gathering on **April 13 at 10am** at Wayside Presbyterian Church, 5017 Lakeshore Road, Hamburg.

The topic of the Program is "**Sacred Encounters in Worship.**" Kathy White will lead us in Contemplative Style Worship, Gail Janiga will lead us in Liturgical Dance and Rev. Holly Clark-Porter will lead us in Praise Worship. There is a \$10 fee for lunch and reservations are to be made before April 4 by calling Sue Sager.

We hope to see you at this enriching and meaningful program.

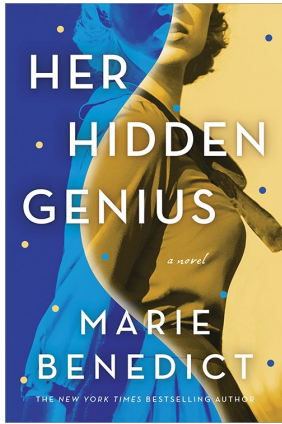


Presbyterian Women's Coordinating Team will meet on **Tuesday, April 9 at 1pm** in The Meeting Place.

Friendship Circle will meet on **Wednesday, April 3 at 10am** in the Irene Irving Room.



Ladies, you are cordially invited to join us for fellowship and Bible study. Lesson seven of **Sacred Encounters** will be discussed. For more information, please call Barbara Roberts or Sue Sager.



OPPC Book Group Presents

Her Hidden Genius by Marie Benedict
Tuesday, April 16 at 7pm in The Meeting Place

Rosalind Franklin has always been an outsider—brilliant, but different. Whether working at the laboratory she adored in Paris or toiling at a university in London, she feels closest to the science, those unchanging laws of physics and chemistry that guide her experiments. When she is assigned to work on DNA, she believes she can unearth its secrets.

Rosalind knows if she just takes one more X-ray picture—one more after thousands—she can unlock the building blocks of life. Never again will she have to listen to her colleagues complain about her, especially Maurice Wilkins who'd rather conspire about genetics with James Watson and Francis Crick than work alongside her.

Then it finally happens—the double helix structure of DNA reveals itself to her with perfect clarity. But what unfolds next, Rosalind could have never predicted.

Marie Benedict's powerful novel shines a light on a woman who sacrificed her life to discover the nature of our very DNA, a woman whose world-changing contributions were hidden by the men around her but whose relentless drive advanced our understanding of humankind.

Stay tuned as well for an announcement from Theatre in Conversation for a special May presentation of **Photograph 51**, a dramatized version of Franklin's story.

Please join us to discuss yet another important woman in history, and bring friends! All are welcome. Contact barbarabadame8@gmail.com for more information or to be added to our email list.

Tuesday, May 21: *The Prayer Box* by Lisa Wingate

TUESDAYS WITH TOOLS

9am—Noon

Bring your tools and come join the crew.
 If you have any questions,
 please contact Jim Wilson.

The Deadline for the May Grapevine

is Tuesday, April 23 at 9am.
 Please send any submissions
 to Xanda at

xanda@oppchurch.org.

If you would like to receive the Grapevine by email, please reach out to Xanda at the same email address.

Secure online giving to OPPC
 available with QR Code.
 Your financial support of OPPC is
 greatly appreciated!





Orchard Park Presbyterian Church
4369 South Buffalo Street
Orchard Park, NY 14127-2611

Forwarding Service Requested

Non-Profit
Organization
U.S. Paid Postage
PERMIT # 39

*A thriving faith
community engaged in
compassionate service.*



Don't Miss OPPC's

F₄ A₁ M₃ I₁ L₁ Y₄

G₂ A₁ M₃ E₁

N₁ I₁ G₂ H₄ T₁

and **Pizza**
PARTY

Saturday, April 27th
6:00 to 8:00 p.m.

— OPPC Reception Room —

We'll Have
Games Available
for All Ages

or
Bring Your Favorite
to Share!

*It's a Great Chance to Introduce
Friends or Neighbors to OPPC!*

Sign Up in the Welcome Center
or

Call 716-206-4753 for Details!

— Presented by the —
Hospitality-Fellowship Ministry Team